

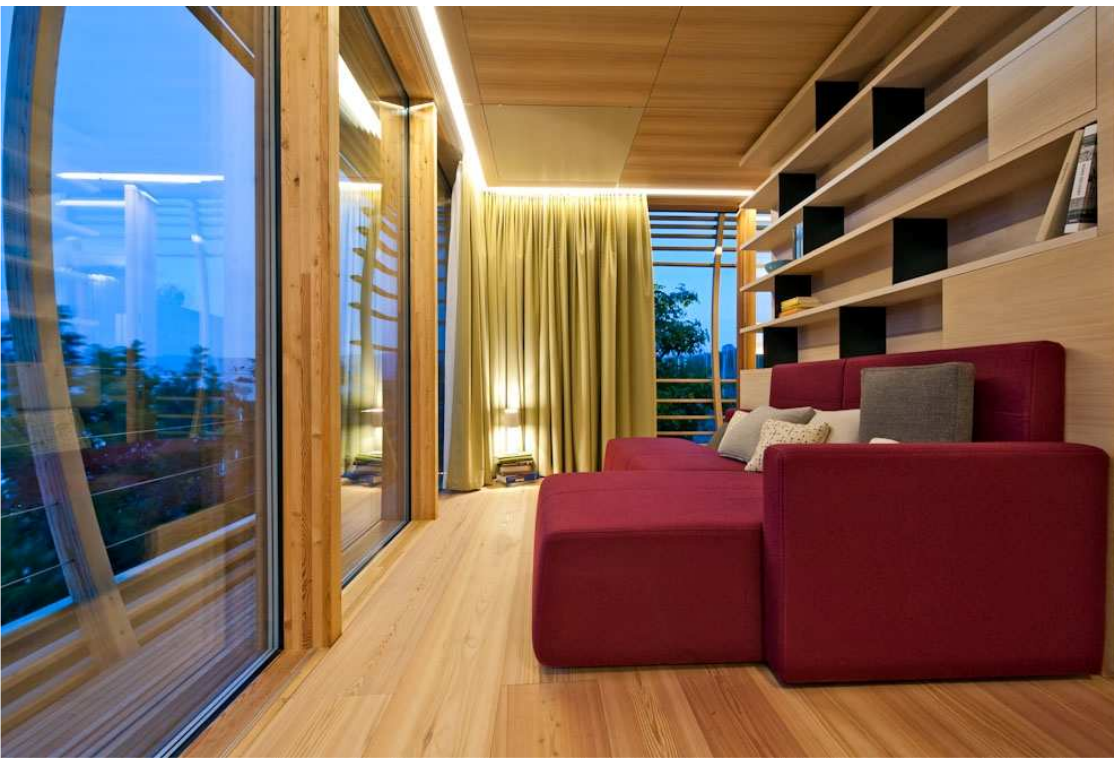
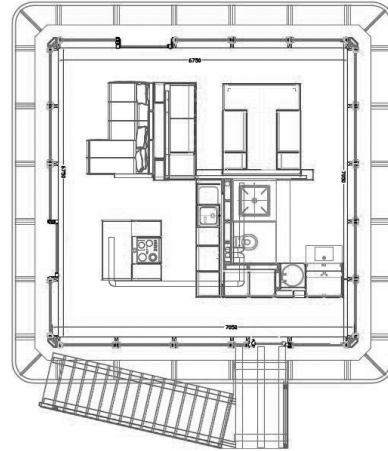
# FINCUBE

## Fincube 47 m<sup>2</sup> Premium (sample house)

A Fincube as a “small + smart house” makes excellent accommodation facilities possible.

The Fincube represents a maximum quality of living and a high level of independence – as an exclusive guesthouse situated in your garden or as a proper residence in a holiday destination, as an accommodation facility for the grown-up second generation or simply as an annex to your mansion.

This Fincube model differs from the standard model by its unlimited quality, technique, and luxury. Special accessories and technical features make the Fincube Premium a high-end version.



## Proposed Price 47 m<sup>2</sup> Fincube Premium (sample house)

POST	DESCRIPTION	SUM
FINCUBE 7x7m (8,5x8,5m with balcony) / Total floor space 47m² / foot print see draft		
CARCASS		
1.1	steel toe for anchoring the columns and cross girders at the foundation	
1.2	floor slabs including insulation	
1.3	floor construction inside with flooring joists	
1.4	larch floor	
1.5	internal walls of solid wood slabs	
1.6	roof slab including insulation	
1.7	window frame for glass front - larch	
1.8	fixed glazing with sunscreen	
1.9	windows 2 pcs., sliding doors 2 pcs., entrance door	
1.10	wood facade - larch	
1.11	wood stairs with landing platform - larch	
INTERIOR FINISH		
2.1	ceiling 700/700cm including light channels and vent elements - brushed, stained and varnished larch	
2.2	closet and wardrobe in the entrance area	
2.3	kitchen floor unit including Corian countertop and niche lighting LED	
2.4	kitchen equipment Neff (dishwasher, refrigerator, hob, oven, washing machine)	
2.5	kitchen island unit 140/140/75 cm including hob and chairs (Fornasari - Design Aisslinger)	
2.6	shelves and couch (Design Asslinger)	
2.7	wardrobe with floor-to-ceiling sliding doors	
2.8	bed including mattress and slat base	
2.9	floor and wall unit for washing basin, wall cladding with mirror and shelf	
2.10	wall claddings with brushed, stained and varnished larch for kitchen, living room, bed room and bathroom	
2.11	shower tray and washing basin (Corian), floor-to-ceiling glass sliding doors, toilet	
2.12	kitchen and bathroom valves (Dornbracht)	
2.13	ceiling heating units 4 pcs., low-energy, electric	
2.14	curtains (Kvadrat)	
2.15	switch, power outlets and intelligent bus system (Berker)	
2.16	indirect ceiling lighting (LED panels), treelamp (Dab - Design Aisslinger)	
ELECTRICAL AND SANITARY INSTALLATION		
3.1	electrical installations - material see item interior finish	
3.2	sanitary installations - material see item interior finish	
TOTAL SUM		243.000,00

\*Prices without taxes

\*The price includes planning, assembling and installation on-site.

\*Transportation costs, plot costs, licensing procedure, connections for water, electricity and telephone as well as infrastructure operations are not included in the price.

\*The interior will be designed according to the customer's wishes and requirements.

The price mentioned is a proposed price for a specific model of the Fincube and without obligation. Errors and changes in prices are excepted.